

# HILTON MUNICH PARK

## THE FACTS



Set against the city's famous Englischer Garten Park and within easy reach of the city's main attractions, shopping and business areas, Hilton Munich Park is the perfect base for exploring all the city has to offer. Wake up in a well-appointed guest room opening onto your own private balcony.

Enjoy attentive and friendly service from our Hilton Team Members and make the most of a wide range of Meeting & Events facilities, including one of Munich's biggest conference centres with capacity for over 1,000 participants.

### AT A GLANCE

- Green and tranquil city location, next to the English Garden
- Spacious, contemporary rooms with a balcony and work space
- Fitness Centre and Indoor Pool
- Versatile meeting & banquet rooms for up to 1,020 people
- Business Centre and Executive Lounge
- On-site restaurant, lobby café and bar

## OUR ROOMS

Total number of rooms: 484  
Guest rooms: 290  
Deluxe rooms: 77  
Executive rooms: 92  
Executive Plus rooms: 16  
Suites: 9  
Non-smoking rooms: 356  
Accessible rooms: 2  
Check-In: 2:00pm  
Check-Out: Noon

### GUEST ROOMS

Feel at home in a bright, airy and contemporary room with a balcony overlooking the garden or the city. Relax watching on-demand movies on the flat-screen TV. A large work desk and high speed internet access makes catching up with business easy.

### EXECUTIVE ROOMS

Business meets leisure in our spacious 25m<sup>2</sup> Executive rooms, located on the higher floors.

Enjoy all of the amenities found in our standard rooms, together with extra touches, such as the stunning views from the higher floors and access to the Executive Lounge with complimentary breakfast, snacks and refreshments.



## OUR FACILITIES

### HILTON FITNESS

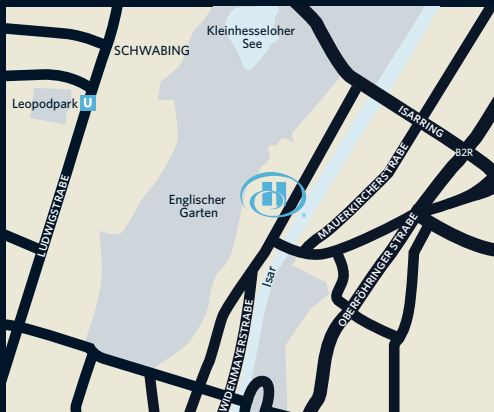
Personalised fitness for a balanced lifestyle while on the road. Featuring the latest generation of cardio and strength training equipment, the extensive fitness centre takes a personalised approach to help you feel your best during your stay.

Take an invigorating dip in the indoor pool, unwind in our sauna and steam room or enjoy a professional massage or a beauty treatment.



## LOCATION

Hilton Munich Park is well situated in a central, but tranquil and attractive location, close to Munich's famous beer gardens and the popular Schwabing district. The hotel is only 30 minutes' drive from Munich Franz-Josef Strauss Airport and within easy reach of the city's major attractions and business areas.



## EAT & DRINK

### TIVOLI RESTAURANT

Located on the banks of the Eisbach river, this stylish restaurant serves an international à la carte menu, with focus on high-quality grilled meat and fish specialities. In summer, the terrace with beer garden provides an attractive outdoor venue. For special occasions and business celebrations of up to 50 people, the Pavillon offers a private dining space within the restaurant.

### PEOPLE'S BAR

Sample our delicious bar snacks or choose from our tempting menu of speciality cocktails and over 150 different whiskies. Popular with locals and Guests alike, this vibrant Munich bar is a great place to meet for pre-dinner drinks or a night cap.

### PEOPLE'S LOUNGE

Sip a freshly ground coffee or tuck into a gourmet burger, salad or home-made cakes in our comfortable lounge within the spacious lobby. A great place to meet or simply watch the bustle of hotel life pass by.

HILTON MUNICH PARK  
Am Tucherpark 7 | 80538 | Munich  
Germany

T: +49 (0)89 3845 0  
F: +49 (0)89 3845 2588  
E: info.munich@hilton.com

[munich-park.hilton.com](http://munich-park.hilton.com)







## HERE ON BUSINESS

Hilton Munich Park offers the space, facilities and support for meetings and events of all types. Choose from 21 meeting rooms supported by a fully-equipped Business Centre, a private Executive Lounge and high speed wireless internet throughout.

Home to one of the largest conference centres in Munich, the hotel meeting facilities include four boardrooms, nine multi-purpose rooms and an 820m<sup>2</sup> Grand Ballroom with space for up to 1,020 people - including its own foyer. The Marco Polo Salon on the 15<sup>th</sup> Floor offers stunning views across the city through large glass windows and is an ideal venue for more formal occasions.

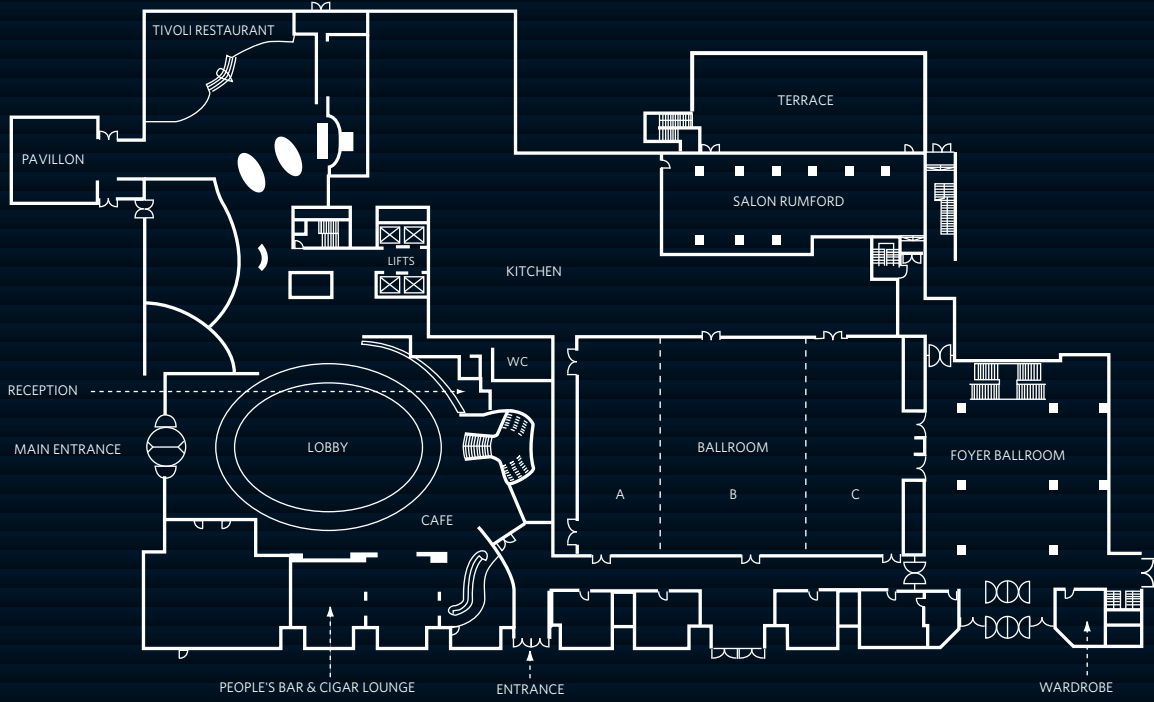
Whether organising a team meeting, a conference or a grand celebration, our Meetings & Events team will be on hand to ensure everything goes exactly as planned.



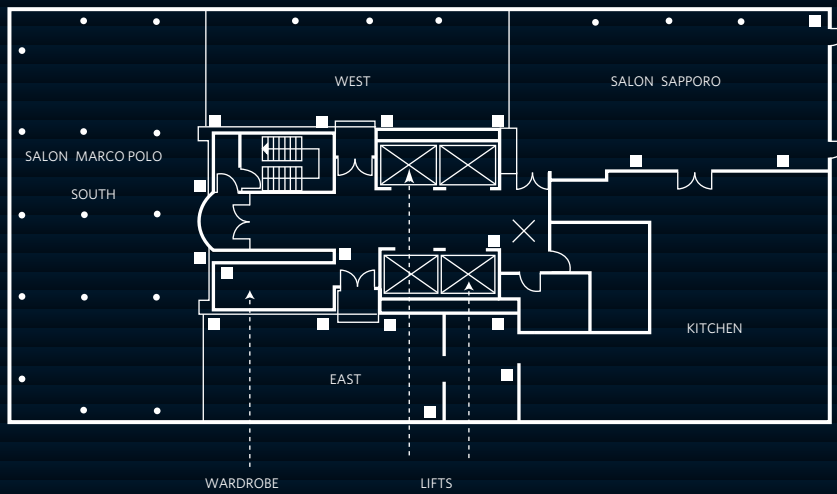
	Reception	Theater	Classroom	Boardroom	U-Shape	Banquet	Floor	Area m <sup>2</sup>	Dimensions L x W x H (m)	Natural Daylight	Air-conditioning	Power Current	Sound System	Dimmer
Ballroom A	—	220	150	—	—	150	Ground	200	23.2 x 8.6 x 4.3	—	•	•	—	•
Ballroom B	—	400	300	—	—	300	Ground	371	23.2 x 16.0 x 4.3	—	•	•	—	•
Ballroom C	—	250	200	—	—	200	Ground	250	23.2 x 10.8 x 4.3	—	•	•	—	•
Ballroom A + B	—	650	410	—	—	490	Ground	571	23.2 x 24.6 x 4.3	—	•	•	—	•
Ballroom B + C	—	700	570	—	—	530	Ground	621	23.2 x 26.8 x 4.3	—	•	•	—	•
Ballroom A + B + C	700	1,020	510	—	—	630	Ground	821	23.2 x 35.4 x 4.3	—	•	•	—	•
Foyer Ballroom	400	—	—	—	—	270	Ground	460	27.5 x 8.5 x 2.8	—	•	•	—	•
Foyer Mezzanine	300	—	—	—	—	180	Ground	340	16.5 x 8.0 x 2.6	•	•	—	—	•
Salon Rumford	200	230	150	70	60	140	Ground	230	27.5 x 8.5 x 2.8	•	•	—	—	•
Salon Marc	—	—	—	10	—	—	Mezzanine	80	10.0 x 8.0 x 2.6	•	•	—	—	•
Salon Kandinsky	—	—	—	14/18	—	—	Mezzanine	52	6.5 x 8.0 x 2.6	•	•	—	—	•
Salon Macke	—	—	—	14/18	—	—	Mezzanine	80	10.0 x 8.0 x 2.6	•	•	—	—	•
Salon Klee	—	—	—	10/14	—	—	Mezzanine	32	7.0 x 4.5 x 2.6	—	•	—	—	•
Salon Chagall	—	30	18/21	12	15	—	Mezzanine	64	7.5 x 8.5 x 2.6	•	•	—	—	•
Salon Matisse	—	50	24/33	21	24	50	Mezzanine	80	9.5 x 8.5 x 2.6	•	•	—	—	•
Salon Cézanne	150	90	45/54	24	30	80	Mezzanine	102	12.0 x 8.5 x 2.6	•	•	—	—	•
Salon Van Gogh	150	70	40/45	27	30	70	Mezzanine	102	12.0 x 8.5 x 2.6	•	•	—	—	•
Salons Cézanne + Van Gogh	150	185	81/110	58	50	150	Mezzanine	204	24.0 x 8.5 x 2.6	•	•	—	—	•
Salon Monet	—	40	27/33	17	20	—	Mezzanine	55	6.5 x 8.5 x 2.6	•	•	—	—	•
Salon Renoir	—	60	26/45	22	25	—	Mezzanine	76	9.0 x 8.5 x 2.6	•	•	—	—	•
Salon Picasso	—	50	24/30	22	21	—	Mezzanine	50	10.0 x 5.0 x 2.6	•	•	—	—	•
Salon Dalí	—	30	18/24	14	15	—	Mezzanine	42	8.50 x 5.0 x 2.6	•	•	—	—	•
Salon Miró	—	20	12	12	—	—	Mezzanine	32	6.50 x 5.0 x 2.6	•	•	—	—	•
Salons Picasso + Dalí	—	80	42/54	30	30	—	Mezzanine	92	15.0 x 5.0 x 2.6	•	•	—	—	•
Salon Sapporo	120	120	54/72	42	39	120	15	132	16.5 x 8.0 x 2.6	•	•	—	—	•
Salon Marco Polo	340	—	—	—	—	330	15	360		•	•	—	—	•



## Ground Floor



## 15<sup>th</sup> Floor



## Mezzanine

